


# Czech Republic

## BUSINESS DELEGATION

accompanying Minister of Transport of the Czech Republic,  
H.E. Mr Martin Kupka, to Montenegro



26 – 28 **May**  
2024

# RACKING SYSTEMS



*For 30 years, we have been providing complete deliveries of storing systems from design to installation. We have supplied our customers with more than 30 million pallet spaces.*

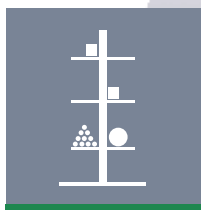
*We also provide post-warranty service, and our parts warehouse enables us ensure fast deliveries and service interventions.*



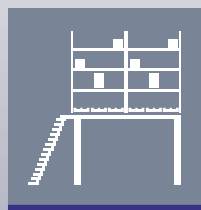
PALLET



SHELVING



CANTILEVER



STEEL PLATFORMS



+420 469 622 279  
proman@proman.cz

PROMAN s.r.o.  
www.proman.cz

Za Pivovarem 830  
537 01 Chrudim, Czech Republic



## CZECHIA BUSINESS DELEGATION

accompanying Minister of Transport of the Czech Republic,  
H.E. Mr Martin Kupka, to Montenegro

26 – 28 May 2024



Prague

## Czech Republic – Basic Data

Surface area:	78 864 sq. km (common border with the Federal Republic of Germany, Austria, Slovakia and Poland)
Population:	10.52 million
Capital city:	Prague
Official language:	Czech
President:	H.E. Mr Petr Pavel
Membership:	European Union, United Nations, NATO, WTO, International Monetary Fund, International Bank for Reconstruction and Development, OECD, etc.
Time zone:	Central European Time (GMT + 1), Summer Time (GMT + 2)
Currency:	1 Czech crown (Kč/CZK) = 100 hellers; 1 EUR = 25.070 (cumulative average 1 Q 2024)
Internet domain:	.cz

Practical information about conditions of transport into the Czech Republic and stay in the CR available at [www.czech.cz](http://www.czech.cz).

## Macroeconomic Indicators of the Czech Republic

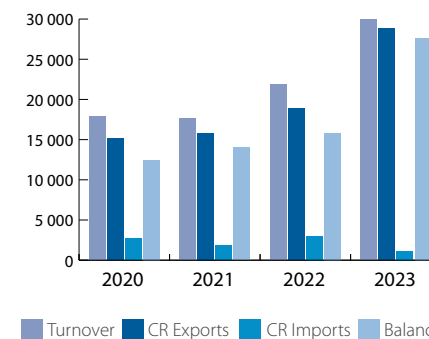
		2018	2019	2020	2021	2022	2023
Gross Domestic Product (current prices) <sup>1)</sup>	CZK, billion	5 410.76	5 791.50	5 709.13	6 108.72	6 785.85	
Gross Domestic Product <sup>1)</sup>	%, real, y/y	3.2	3	-5.5	3.5	2.5	-0.7
Industrial Production	%, y/y	3.1	-0.3	-7.2	6.6	2.5	-0.4
Registered unemployment <sup>2)</sup>	%	3.07	2.87	3.51	3.5	3.7	3.7
General unemployment rate according to selective labour force examination <sup>3)</sup>	%	2.2	2	2.6	2.8	2.2	2.6
Inflation Rate	%, y/y	2.1	2.8	3.2	3.8	15.1	10.7
Inflation (HICP) <sup>4)</sup>	%, average	2	2.6	3.3	3.3	14.8	
Exports <sup>5)</sup>	EUR, mil.	171 716	178 398	168 118	192 238	229 500	
Exports <sup>5)</sup>	%, y/y	6.5	0.2	-5.7	14.3	19.4	7.2
Imports <sup>5)</sup>	EUR, mil.	156 852	160 435	150 000	179 979	224 555	
Imports <sup>5)</sup>	%, y/y	8.5	2.3	-7	19.9	24.8	-6.1
Balance of Trade <sup>5)</sup>	EUR, mil.	14 864	17 963	18 118	12 259	4 946	
CZK/EUR <sup>6)</sup>	average	25.643	25.672	26.444	25.645	24.57	24.007
CZK/USD <sup>6)</sup>	average	21.735	22.934	23.196	21.68	23.4	22.21

Source: Czech Statistical Office, Czech National Bank (ČNB); General note: y/y shows year-on-year change in the indicator; 1) Data after revision under the ESA 2010 system of accounts, year 2022 preliminary data, year 2023 estimate; 2) Unemployment to total population ratio = number of eligible job seekers aged 15-64 years/population in per cent, situation at the end of the year; 3) LFSS = Labour Force Sample Survey; 4) HICP = Harmonised Index of Consumer Prices, inflation rate by EU method; 5) Foreign trade data expressed in USD are the sum of the different monthly values in CZK calculated by the average monthly exchange rate announced by the Czech National Bank; 6) Czech National Bank

## Balance of Trade between the Czech Republic and of Montenegro (in EUR thousand)

	Turnover	CR Exports	CR Imports	Balance
2020	17 843	15 153	2 690	12 462
2021	17 647	15 820	1 827	13 993
2022	21 862	18 835	3 027	15 809
2023	29 958	28 809	1 149	27 660

Source: Ministry of Industry and Trade of the Czech Republic





Dear Ladies and Gentlemen,

Our business and science mission to Montenegro has two main objectives. Firstly, we want to deepen our cooperation with our partners in the areas of transport, transport infrastructure, modern technologies, and zero-emission mobility. I greatly appreciate that entrepreneurs and researchers accompany our delegation and contribute to this goal. Representatives of Czech companies and the research team will also engage in the Business Forum and B2B meetings.

The second objective is to discuss the shared interests of the Czech Republic and Montenegro. Therefore, seminars on road safety, European transport policy, and smart mobility will be held. We want to offer our partners cooperation with Czech technological and innovation teams and companies, as well as specialists in planning, preparation, zoning, and construction, and to set up opportunities for research collaboration.

This mission is also the first opportunity for a joint session of the Intergovernmental Commission for the Development of Economic and other cooperation to discuss issues related to agriculture, environment, defence and security, etc.

I believe that all meetings will lead to new partnerships that will strengthen the prosperity of both States and ensure long-term stable cooperation in the Western Balkans, where the Czech Republic already has a good reputation.

**Martin Kupka**

*Minister of Transport of the Czech Republic*



Ladies and gentlemen,

Let me please address you on behalf of the Czech Chamber of Commerce as the leader of our business mission to Montenegro. This mission is accompanying the Minister of Transport of the Czech Republic, H.E. Mr. Martin Kupka, and focuses on companies in the fields of construction and transport infrastructure, rail, bus and air transport, transport mechanization, transport telematics and electromobility, smart cities and artificial intelligence.

Our delegation consists of companies that are already involved in ongoing projects in these sectors as well as companies looking for new business and investment opportunities.

In our delegation you will find prominent companies specialising in transport and logistics, vehicles production, information and automation technologies. They are renowned for their pioneering innovations, technical expertise, and unwavering pursuit of excellence. These companies are confident of establishing lasting partnerships with Montenegro's business community.

We are certain that this visit shall significantly contribute to the economic ties between Czechia and Montenegro. Through productive dialogue and joint efforts, we can explore new pathways for investments, trade, and cooperation that promise benefits and growth.

I am very pleased that the Czech Chamber of Commerce can assist you in finding new partnerships and joint projects.

I wish you many successful business meetings!

**Radek Jakubský**

*Vice President of the Czech Chamber of Commerce*

## Companies

1. AŽD Praha s.r.o.
2. ČD Cargo Logistics, a.s.
3. EGT Express CZ, s.r.o.
4. Eltodo a.s.
5. Futtec a.s.
6. GIS-GEOINDUSTRY, s.r.o.
7. NFRAM a.s.
8. OHLA ŽS, a.s.
9. Ostendorf-OSMA s.r.o.
10. Pars Komponenty s.r.o.
11. REGUTEC a.s.
12. SaZ s.r.o.
13. Intelligent Transport Systems & Services (SDT in Czech)
14. ŠKODA DIGITAL s.r.o.
15. ŠKODA TRANSPORTATION a.s.
16. VODNÍ ZDROJE, a.s.
17. ZIMATECHNIK s.r.o. ZIMATECHNIK s.r.o.

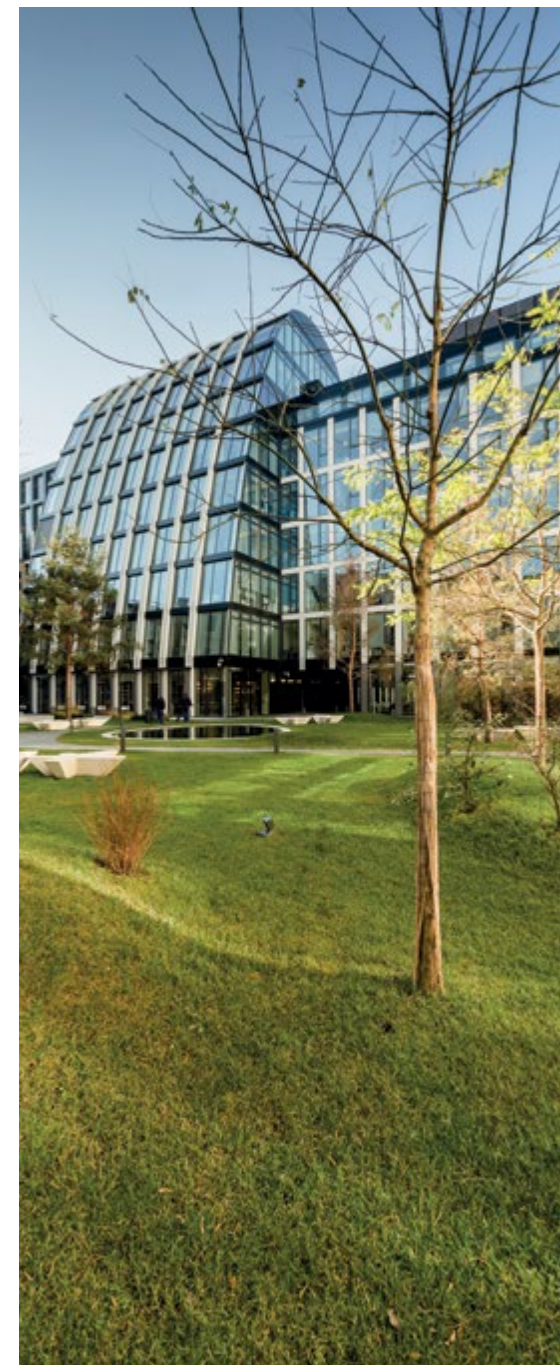
## CZECH CHAMBER OF COMMERCE

Florentinum (Reception A)  
Na Florenci 2116/15, 110 00 Praha 1  
Phone: +420 266 721 300  
E-mail: office@komora.cz  
www.komora.cz



**Participants:**  
**Radek Jakubský,**  
Vice President  
**Jiří Hansl,** Director of Foreign  
Department  
**Eva Langerová,** Project  
Manager

The Czech Chamber of Commerce was established in 1993 as a national chamber with non-compulsory membership. It is the largest and most representative business association in the Czech Republic including small, medium and large companies, self-employed entrepreneurs, associations, unions and craftsmen organisations. The Czech Chamber of Commerce has regional (regions and districts) and professional (unions, associations, etc.) networks with approximately 16 000 members. They represent 60% of the GDP of the country and 66% of the employable population in the Czech Republic. The Czech Chamber of Commerce provides services to its members, mainly in the field of legislation, export promotion, education, etc. Its main aim is to facilitate access to foreign markets for the Czech business community and help to create a favourable business environment in the Czech Republic.



**1. AŽD PRAHA S.R.O.**

Žirovnická 3146/2, 106 00 Praha 10  
 Phone: +420 602 125 268  
 E-mail: sigut.rene@azd.cz  
 www.azd.cz



**Participant:**  
**René Šigut**, Country  
 Manager

**Company activities, products, and services:**  
 The AŽD company is a significant and all-Czech producer and supplier of signalling, telecommunication, information and automation technologies. It is mainly focused on the rail and road transport field including telematics and other technologies. The company ensures research, development, design, production, installation, reconstruction and maintenance of devices, systems and pursues capital equipment.

**Number of Employees:** 2200  
**Year of Foundation:** 1954

**Notes:**  
 .....  
 .....  
 .....  
 .....  
 .....  
 .....  
 .....  
 .....

**2. ČD CARGO LOGISTICS, A.S.**

Opletalova 1284, 110 00 Praha 1  
 Phone: +420 602 531 215  
 E-mail: vojtech.broucek@cdcl.cz  
 www.cdccargologistics.cz/cs



**Participant:**  
**Vojtěch Brouček**, Senior  
 Manager

**Company activities, products, and services:**  
 ČD Cargo Logistics – international forwarding specialist of ČD Cargo (Czech Railways Group) – focuses on comprehensive logistics solutions with special focus on railway transport, but also road, sea, and air transport  
 We provide our services not only in Czechia but throughout Europe and Central Asia & China:

- Transportation of extraordinary and oversized consignments, mainly by rail
- Product trains – regular railway connections across Europe
- Railway transport on wide gauge – Ukraine, Central Asia, Belarus, Russia
- Ocean transport - containers & bulk cargo, connection to railway & road transport
- Road transport across Europe

**Number of Employees:** 35  
**Year of Foundation:** 2007

**Notes:**  
 .....  
 .....  
 .....

**3. EGT EXPRESS CZ, S.R.O.**

Olomoucká 1001, 783 53 Velká Bystřice  
 Phone: +420 773 787 501  
 E-mail: p.mikel@egtexpress.com  
 www.egtexpress.com



**Participant:**  
**Petr Mikel**, Business  
 Manager

**Company activities, products, and services:**  
 Express transport, road transport, air transport, warehousing, customs clearance, IOSS e-commerce solution, oversize transport

**Number of Employees:** 220  
**Year of Foundation:** 1995

**Notes:**  
 .....  
 .....  
 .....  
 .....  
 .....  
 .....  
 .....  
 .....  
 .....  
 .....

**4. ELTODO A.S.**

Novodvorská 1010/14, 142 00 Praha 4  
 Phone: +420 727 849 068  
 +420 603 192 286  
 E-mail: voleskyd@eltodo.cz  
 PovejsilL@eltodo.cz  
 www.eltodo.cz



**Participants:**  
**Libor Povejšil**, Divisional  
 Executive Director  
**Dušan Voleský**, Business  
 Manager

**Company activities, products, and services:**  
 Eltodo a.s. offers a diverse range of services:

- City & Municipality: Public lighting, Intelligent Transport Systems, Parking systems, Camera systems
- Construction: Electrotechnical engineering, Tunnel Technology & Telematics, Services for operators and owners of real estate
- Technology: Intelligent systems for traffic management, ICT
- Energy Systems: Engineering services in the construction and reconstruction of energy facilities
- Industrial: Engineering services for the construction and reconstruction of industrial facilities
- Telecommunication: Maintenance and support of transmission network

**Number of Employees:** 1058  
**Year of Foundation:** 1991

**Notes:**  
 .....  
 .....

# Services provided by the company

## 5. FUTTEC A.S.

Kubelíkova 11, 130 00 Praha 3  
 Phone: +420 602 363 204  
 E-mail: [ondrej.rusikvas@futtec.cz](mailto:ondrej.rusikvas@futtec.cz)  
[www.futtec.cz](http://www.futtec.cz)



**Participant:**  
**Ondřej Rušikvas, CCO**

## 6. GIS-GEOINDUSTRY, S.R.O.

Tleskačova 1329/16, 323 00 Plzeň  
 Phone: +420 602 227 382  
 E-mail: [tomas.hajek@vodnizdroje.cz](mailto:tomas.hajek@vodnizdroje.cz)  
[www.geoindustry.cz/uvod/](http://www.geoindustry.cz/uvod/)



**Participant:**  
**Tomáš Hájek, Executive Director**

### Company activities, products, and services:

We have developed a unique asphalt road repair system based on the innovative use of microwave heating technology (MWHT)

We have patented technology, own production of MW Patchers – FT-3+, combined with an ecosystem for road monitoring, a data platform, services, and packaged asphalt mixtures. We have created a dedicated team of specialists and innovators who aim to change the usual approach to repairs and maintenance of asphalt roads.

Our research team developed special machines using a unique microwave technology for heating asphalt surfaces and packed asphalt repair mixtures.

We are working on a road monitoring software able to identify initial surface defects and to plan their fast and efficient MW repairs.

**Number of Employees:** 25

**Year of Foundation:** 2011

### Company activities, products, and services:

GIS - GEOINDUSTRY, s.r.o. is one of the leading geological and exploration companies in the Czech Republic. It has specialists in deep drilling, geology, hydrogeology, mining and environmental protection. The development of our company is based on experience and a long tradition that dates back to 1909. The main activities of this company include geological exploration, including the provision of documents for linear construction, evaluation of raw material and aggregate deposits for construction, securing or disposal of old mine workings, and environmental protection. In the region of Montenegro, the company has experience, for example, in the implementation of projects financed by the Czech Development Agency.

**Number of Employees:** 30

**Year of Foundation:** 1909

**Notes:**

.....

.....

- Engineering activities in the construction industry
- Construction site supervision and supervision of the transportation infrastructure (FIDIC)
- Experts' activities in the area of roads, railways and bridges
- Structure of the railway superstructure – use of Y-shaped steel sleepers
- Structure of the railway crossings - type BODAN, BO-Track
- Cooperation with Universities focused on the research tasks (recycling, 3D print of concrete)
- In case of interest, please contact us at email: [jerabek@infram.cz](mailto:jerabek@infram.cz)

[www.infram.cz](http://www.infram.cz)



**7. INFRAM A.S.**

Pelušková 1407, 198 00 Praha 9  
Phone: +420 602 374 181  
+420 721 023 226  
E-mail: jerabek@infram.cz  
david.jerabek@infram.cz  
www.infram.cz



**Participants:**  
**Zdeněk Jeřábek**, CEO  
**David Jeřábek**, Sales Representative

**8. OHLA ŽS, A.S.**

Tuřanka 1554/115b, 627 00 Brno  
Phone: +420 602 751 579  
E-mail: ledabylj@ohla-zs.cz  
www.ohla-zs.cz



**Participant:**  
**Jan Ledabyl**, Deputy Sales Director



**Company activities, products, and services:**

- Engineering activities in the construction industry
- Construction site supervision and supervision of the transportation infrastructure (FIDIC)
- Experts' activities in the area of roads, railways and bridges
- Structure of the railway superstructure – use of Y-shaped steel sleepers
- Structure of the railway crossings - type BODAN, BO-Track

**Number of Employees:** 80

**Year of Foundation:** 1996

**Notes:**

.....

.....

.....

.....

.....

.....

.....

.....

.....

.....

**Company activities, products, and services:**

OHLA ŽS, a.s. is a dynamic multi-disciplinary construction company with more than 70 years of tradition, focusing on the complex execution of large scale construction projects, their modernization, maintenance and reconstruction.

The scope of activities of OHLA ŽS, a.s. includes the field of civil, railway, road and underground construction, water management and engineering structures, supplies of power and traction technologies, and also machinery and transport services.

**Number of Employees:** 1400

**Year of Foundation:** 1952

**Notes:**

.....

.....

.....

.....

.....

.....

.....

.....

.....

.....



**OHLA ŽS, a.s.** is a progressive construction company which focuses on the complex implementation of construction projects, their modernization, maintenance and reconstruction. The company has been active in the construction market for more than 70 years and is one of the largest companies in the field in the Czech Republic. Since 2003, it has been part of the multinational Spanish construction group OHLA.

The portfolio of OHLA ŽS activities includes a wide range of construction fields, including building, railway, road and underground construction, water management and civil engineering projects, rehabilitation and technological equipments.



# Ostendorf - OSMA s.r.o.

Komorovice 1, 396 01 Humpolec, Czech republic



**OSMA your producer, supplier and partner for modern solutions of waste water systems!**



[www.ostendorf-osma.com](http://www.ostendorf-osma.com)



## 9. OSTENDORF-OSMA S.R.O.

Komorovice 1, 396 01 Komorovice  
Humpolec  
Phone: ++420 606 072 463  
E-mail: [sturm@ostendorf-osma.cz](mailto:sturm@ostendorf-osma.cz)  
[www.ostendorf-osma.com](http://www.ostendorf-osma.com)



**Participant:**  
**Thorsten Sturm**, Executive Director

## 10. PARS KOMPLEMENTY S.R.O.

Malá Strana 451, 742 13 Studénka  
Phone: +420 606 840 946  
E-mail: [mazanec@parskomponenty.cz](mailto:mazanec@parskomponenty.cz)  
[www.parskomponenty.cz](http://www.parskomponenty.cz)



**Participant:**  
**Ladislav Mazanec**, Executive Director

### Company activities, products, and services:

Ostendorf-OSMA s.r.o.

is a leading system manufacturer and supplier of plastic wastewater systems and an innovative international operating organization. Is a know one brand that represents a best practice of manufacturing, quality assurance, sales, logistics, after sales, marketing and consulting in providing high-quality plastic sewage systems of PP and PVC.

OSMA subscribes to corporate responsibility towards the ethics, environment, fairness and in harmony to the nature.

**Number of Employees:** 95

**Year of Foundation:** 1994

### Notes:

.....

.....

.....

.....

.....

.....

.....

.....

.....

.....

### Company activities, products, and services:

We are a Czech family company founded in 1998 with a manufacturing tradition dating back more than 115 years. Included in what we do is the production of components for rolling stock, light rail vehicles, metro, commuter and regional trains, passenger wagons and locomotives. Our own design and engineering team is supported by complete in-house production technologies.

**Number of Employees:** 82

**Year of Foundation:** 1998

### Notes:

.....

.....

.....

.....

.....

.....

.....

.....

.....

.....



## 15. ŠKODA TRANSPORTATION A.S.

Emila Škody 2922/1, 301 00 Plzeň  
Phone: +420 605 234 461  
E-mail: olesea.lachi@skodagroup.com  
www.skodagroup.com/cs



**Participant:**  
**Olesea Lachi**, Sales Area  
Director

## 16. VODNÍ ZDROJE, A.S.

Jindřicha Plachty 535/16, 150 00 Praha 5  
Phone: +420 606 628 399  
E-mail: zdenek.formanek@vodnizdroje.cz  
www.vodnizdroje.cz



**Participant:**  
**Zdeněk Formánek**,  
Member of the Supervisory  
Board

### Company activities, products, and services:

Škoda Group is a traditional engineering company which designs and manufactures electrical rail vehicles for urban and railway transportation. Škoda Group controls a number of other companies active in the field of development and manufacturing of rolling stock, electrical motors, drives as well as digital solutions for Transportation systems in several European countries. It is also a leader in trolleybus and e-bus production.

**Number of Employees:** 10 000

**Year of Foundation:** 1995

### Notes:

.....  
.....  
.....  
.....  
.....  
.....  
.....  
.....  
.....  
.....

### Company activities, products, and services:

VODNÍ ZDROJE, a.s. is a company with more than sixty years of tradition in the field of water management, hydrogeology, construction and maintenance of drinking water sources, removal of environmental burdens. Its activities also include solidification of sludge and unloadable soils, which is a field with an overlap into linear constructions (building roads, railways, ports). The company has been established in the region of Montenegro for a long time. The company has experience in preparing projects and obtaining financing from EU funds, the Czech Development Agency, and others. At the same time, the firm has experience in transferring know-how from both the commercial and state sectors to EU candidate countries.

**Number of Employees:** 50

**Year of Foundation:** 1957

### Notes:

.....  
.....

# VODNÍ ZDROJE, a.s.

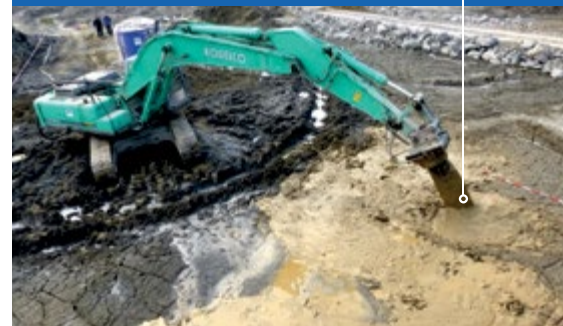
[www.vodnizdroje.cz](http://www.vodnizdroje.cz)

HYDROGEOLOGY  
ENVIRONMENT  
WATER BUILDINGS



DRILLING WELLS

SOIL / WASTE / MUD  
SOLIDIFICATIONS



DRINKING WATER  
TECHNOLOGIES



BOREHOLES INSPECTIONS &  
REGENERATIONS



VODNÍ ZDROJE, a.s.  
Jindřicha Plachty 535/16  
150 00 Praha 5  
CZECH REPUBLIC



obchodni @ vodnizdroje.cz

## 17. ZIMATECHNIK S.R.O.

Na Balkáně 61, 582 63 Ždírec nad Doubravou  
Phone: +420 739 337 817  
E-mail: robert.malek@zimatechnik.cz  
www.zimatechnik.cz



**Participant:**  
**Robert Málek, CEO**

### Company activities, products, and services:

ZIMATECHNIK company was founded in 1994 year. Since 2010 is company owned by Mr. Ing. Robert Málek and Mr. Petr Švajda. Together they started with business and engineering activities in country and abroad with focus on CIS countries.

ZIMATECHNIK company deals with bogie development in field of the roling stock, tram car modernization, new tram car and passanger railroad car design, production and supply rail bogie and components.

ZIMATECHNIK company cooperates in field of the development technologies for environmentally friendly processing of the waste, also the usage of hydrogen and raw materials created by waste processing.

**Number of Employees:** 3

**Year of Foundation:** 1994

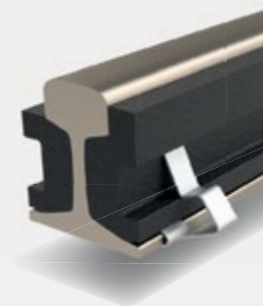
**Notes:**

.....  
.....



## RECYCLED RUBBER PRODUCTS For Railways

The company Regutec also supplies acoustic insulation for rail tracks and all rail beds, tram lines and metros. The transmission of sound and vibrations to the surrounding area is reduced thanks to our products, thereby contributing towards improving the quality of life of people living in the vicinity of infrastructure works.





## **CZECH CHAMBER OF COMMERCE**

Florentinum (Reception A)

Na Florenci 2116/15, 110 00 Praha 1

Phone: +420 266 721 300

E-mail: [foreigndpt@komora.cz](mailto:foreigndpt@komora.cz)

[www.komora.cz](http://www.komora.cz)

---

## **PP AGENCY**

The Catalogue of the Business Delegation  
has been prepared by the PP Agency s.r.o.  
[www.ppagency.cz](http://www.ppagency.cz)